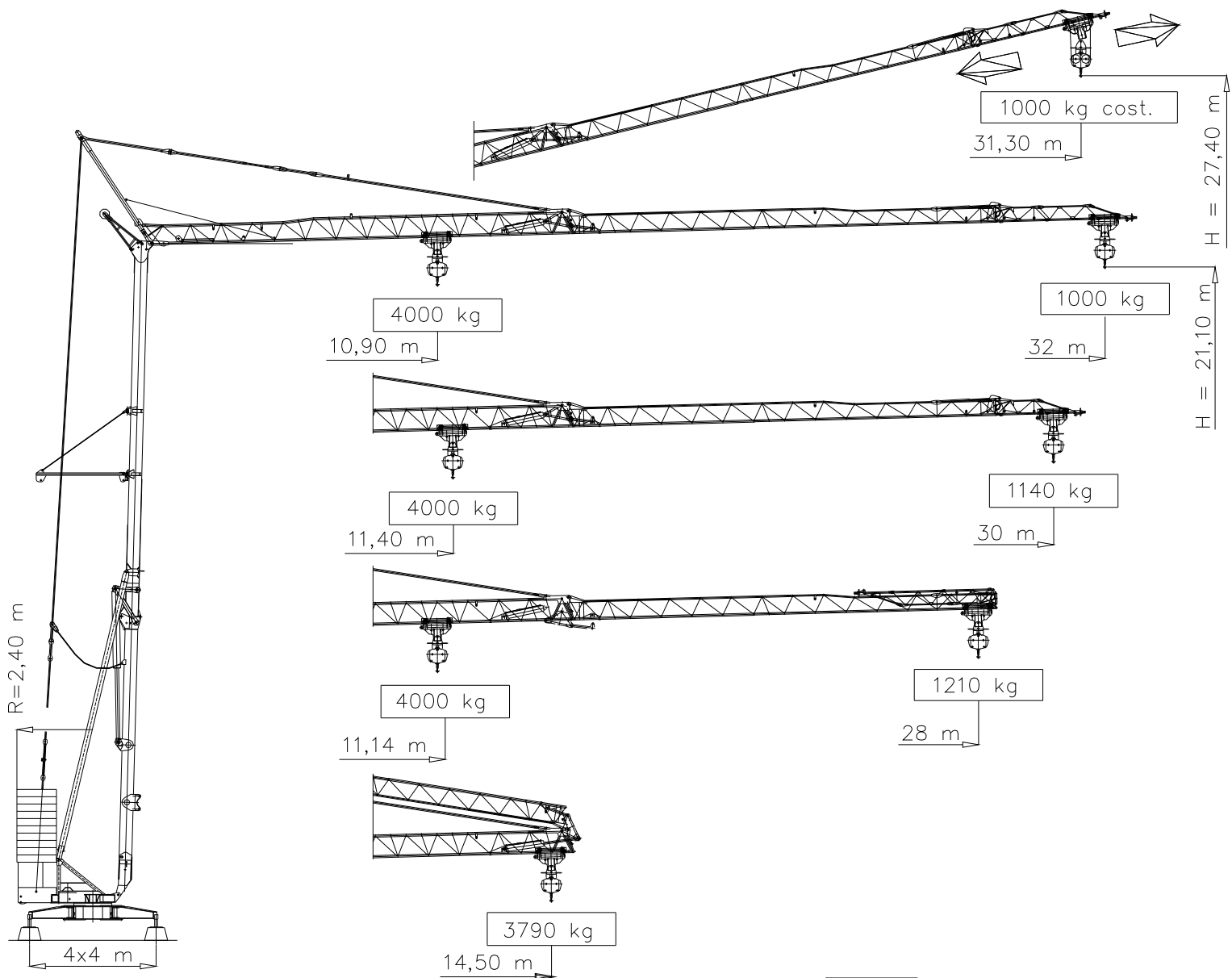




MaSol S.R.L.®
MACCHINE SOLLEVAMENTO

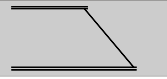
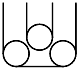

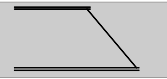
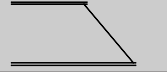
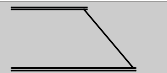
H.S. 32.10



MA.SOL. s.r.l.

Stabilimento ed uffici: via Buonarroti 26/7 26024 Paderno Ponchielli (CR) Italy - Mecc. Estero CR 010071
Tel.: +39 0374 367098 - Fax: +39 0374 367128 - E-mail: info@masol.it - Web: www.masol.it





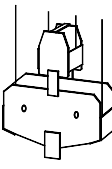



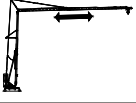
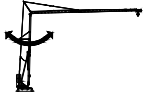
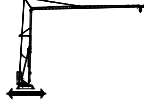

Courbes de charges - Lastkurven - Load curves - Curve di carico

32 m														m	
		10,90	12	14	16	18	18,91	20	22	24	26	28	30		32
		4000	3570	2950	2445	2120	2000	1870	1660	1490	1350	1180	1080	1000	
30 m														m	
		11,40	12	14	16	18	19,70	20	22	24	26	28	30		kg
		4000	3750	3100	2570	2220	2000	1965	1750	1570	1430	1245	1140		
28 m														m	
		11,14	12	14	16	18	19,20	20	22	24	26	28	kg		
		4000	3645	2940	2495	2160	2000	1900	1700	1450	1385	1210			
14,5 m													m		
		13,88	14,50	kg											
		4000	3790												

Flèche relevée - Ausleger in Steinstellung
Luffing jib - Braccio impennato

1000 kg - cost.

Mécanismes - Antriebe Mechanisms - Meccanismi

			m/min	kg	CV-PS hp	kw
Levage Heben Hoisting Sollevamento			6	2000	3	2,2
			24	2000	12	8,8
			48	1300	14	10,3
			3	4000	3	2,2
			12	4000	12	8,8
			24	2600	14	10,3
Distribution - Katzfahren Trolleying - Carrello			20/40		1,5/3	1,1/2,2
Orientation - Schwenken Slewing - Rotazione			0,2-0,95 rpm - g/min		3,5 daNm	
Translation - Kranfahren Travelling - Traslazione			30		1,5x n°2	1,1x n°2
Puissance électrique nécessaire - Anschlusswert Necessary electric power Potenza elettrica necessaria	380 V 50 hz 	Réseau - Netzstrom Mains supply - Potenza			20 kw	
				Nous consulter Auf Anfrage - Consult us Consultarci		

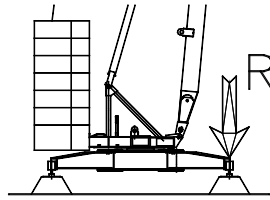
Poids de construction sans essieux - Konstruktionsgewicht ohne Transportachse
Dead weight without transport axles - Peso della gru senza assali

11600 kg

Poids du lest - Ballastgewicht - Ballast weight - Peso zavorra rotante

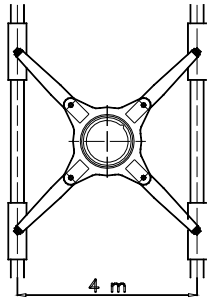
23000 kg

Réactions - Eckdrucke - Reactions - Reazioni

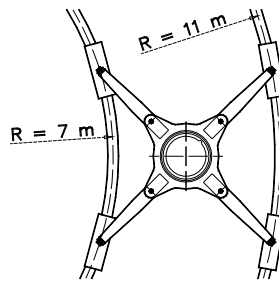


R ● 19800 daN ■ 15700 daN

● En service	● In Betrieb	● In service	● In servizio
■ Pas en service	■ Ausser Betrieb	■ Out of service	■ Fuori servizio

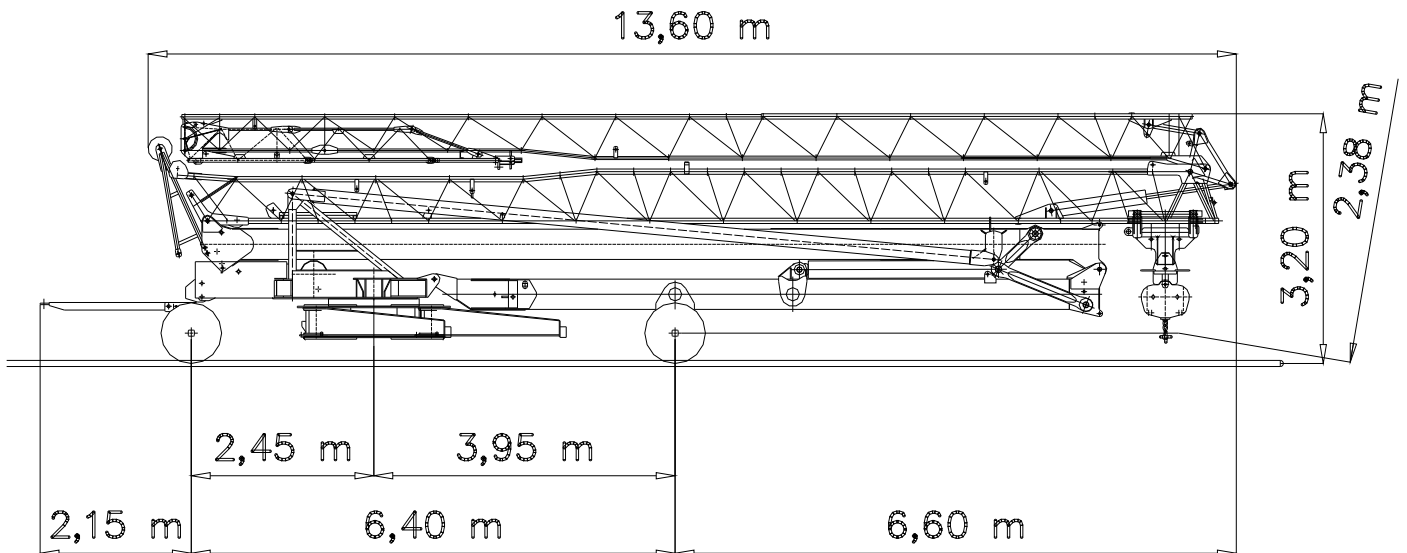


Version voie droite
Ausführung gerade Schienenbahn
Straight track version
Versione traslazione diritta



Version voie courbe
Ausführung kurven Schienenbahn
Curved track version
Versione traslazione curva

Mode de transport - Transportart - Kind of transport - Soluzione di traino



Montage - Montage - Erection - Montaggio

